

R SUITES

CHANCERY

RESIDENCES

BY RADIUM

FREEHOLD

The sleek and modern architectural touch of the Chancery Residences commands attention from all directions.

With its prime location, the residence is set to emerge as a landmark onto its own. Its luxurious ambience promises an exceptional lifestyle right in the heart of the city.

R SUITES

CHANCERY

RESIDENCES

*SUPERIMPOSED
PANORAMIC AERIAL VIEW



*ARTIST'S IMPRESSION

BREATHTAKING

Just beyond a scenic water lily pond, tree-lined avenues lead to eight resplendent gardens and 32 lifestyle facilities perfect for any age whether it is a quick Zoom meeting, workout or simply relaxing.



*ARTIST'S IMPRESSION



*Artist's Impression

UNWIND

Beyond the shimmering pool, flit between chilled drinks at the lounge to idling the day away beneath the palms.

32 LIFESTYLE FACILITIES

Level 9

LEGEND

- | | | | |
|-------------------|-------------------------|-----------------------|---|
| 1 Lap Pool | 8 Children's Playground | 15 Seating Logs | 22 Spice Garden |
| 2 Aqua Gym | 9 Glamping Pod | 16 Monet Garden | 23 Zen Garden |
| 3 Children's Pool | 10 Forest Trail | 17 Vine Trellis | 24 The Meadow |
| 4 Bubble Bath | 11 Hammock Garden | 18 Party Lawn | 25 Sculpture Garden |
| 5 Chillax Lounge | 12 Secret Alcove | 19 Party/BBQ Pavilion | 26 Outdoor Lounge |
| 6 Party Pool | 13 Reflexology Path | 20 Pristine Lawn | 27 Co-working Space |
| 7 Dining Pavilion | 14 Summer Garden | 21 Seating Alcove | 28 Basketball Court & Multipurpose Hall |



Level 9 Mezzanine

LEGEND

- | | | | |
|--------------------|--------|---------------|-----------------|
| 29 Yoga/Dance Room | 30 Gym | 31 Games Room | 32 Mini Theatre |
|--------------------|--------|---------------|-----------------|



Series A

The figure displays three architectural floor plans for different unit types in the SOHO development. Each plan is oriented vertically and includes the following labeled areas: ENTRANCE, LIVING, DINING, KITCHEN, and BATHROOM. The plans are distinguished by their overall dimensions and unit identifiers.

- SOHO (Unit A):** Dimensions are 4200 (width) by 9695 (height). The layout features a central living area, a dining area, a kitchen, and a bathroom.
- SOHO A1:** Dimensions are 4250 (width) by 9695 (height). The layout is similar to the standard SOHO unit but with a slightly wider width.
- SOHO A2:** Dimensions are 4505 (width) by 9695 (height). This unit is wider than the others, providing more space in the living and dining areas.

Left Floor Plan (47 sq.m): This plan shows a rectangular unit with a width of 4200 and a depth of 10960. The layout includes a living area with a sofa and armchair, a dining area with a table and chairs, a kitchen with a sink and stove, a bathroom with a toilet and shower, and an entrance. There is also a small balcony area at the top right.

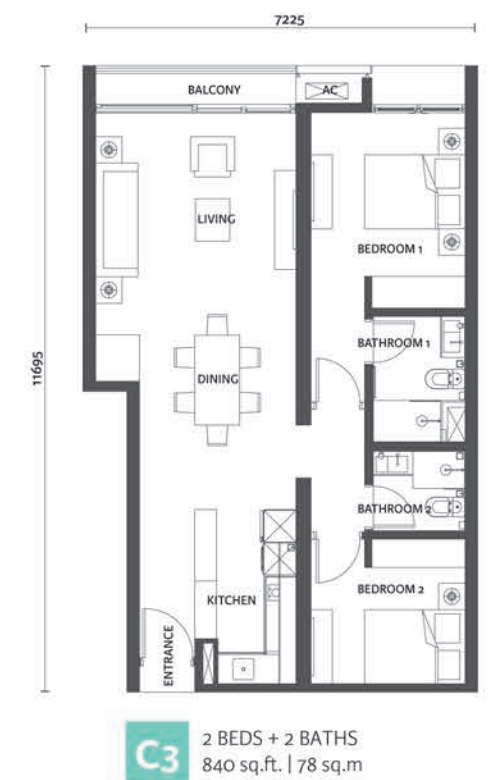
Right Floor Plan (47 sq.m): This plan shows a rectangular unit with a width of 4200 and a depth of 11215. The layout includes a balcony at the top, a living area with a sofa and armchair, a dining area with a table and chairs, a kitchen with a sink and stove, a bathroom with a toilet and shower, and an entrance. The unit is slightly larger in depth than the left one.

Option C
 2 BEDS + 2 BATHS
 840 sq.ft. | 78 sq.m

Option C1
 2 BEDS + 2 BATHS
 840 sq.ft. | 78 sq.m

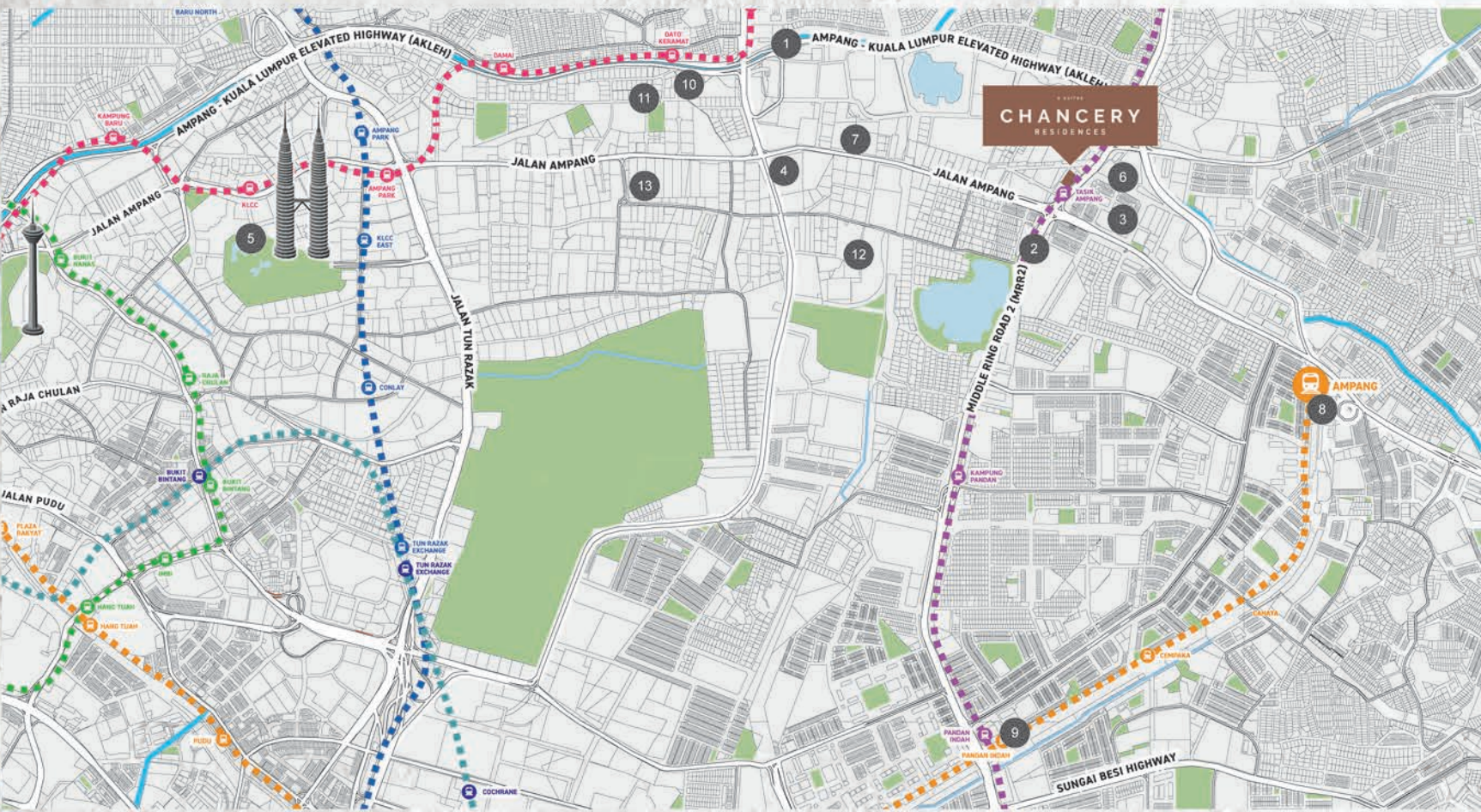
Option C2
 2 BEDS + 2 BATHS
 861 sq.ft. | 80 sq.m

STRUCTURE	Reinforced Concrete Frame		
WALL	Masonry Brick/ Concrete Wall/ Lightweight Block & Panel		
WALL FINISHES	Quality Tiles	- Bathrooms Ceiling Height	- All Unit Types
	Skim Coat & Paint Finish	- All Other Walls	
FLOOR FINISHES	Quality Tiles	- SOHO	- Type A, A1, A2,B, B1, C, C1, C2, C3
		- Balcony	- Type B1, C, C1, C2, C3
		- All Bathrooms	- All Unit Types
	Timber	- Master Bedroom/ Bedroom 2/ Bedroom 3/ Bedroom 4	- Type C, C1, C2, C3
	Cement Render	- AC Ledge	
WINDOW	Aluminium Framed Window With Glass		
DOOR	Fire Door/ Timber Door/ Plywood Flush Door/Aluminium Framed Sliding Glass Door/ Frameless Glass Door		
LOCKS	Quality Locksets		
CEILING FINISHES	Skim Coat & Paint	- All Ceilings	
	Plaster Ceiling	- All Bathrooms	
ROOF	Reinforced Concrete Roof/ Metal Decking Roof		

[illegible][illegible]

STRATEGICALLY LOCATED FOR BEST CONNECTIVITY

Nestled in the city's main business hub, Chancery Residences offers a vibrant lifestyle, enveloped in gorgeous interiors for the discerning.



MAJOR HIGHWAY

1. Ampang KL Elevated Highway (AKLEH)
2. Middle Ring Road 2 (MRR2)



SHOPPING CENTRE

3. Ampang Point Shopping Mall
4. Great Eastern Mall
5. Suria KLCC



MEDICAL CENTRE

6. KPJ Ampang Puteri Specialist Hospital
7. Gleneagles Hospital KL



PUBLIC TRANSPORTATION

8. LRT Ampang (6 min)
9. LRT Pandan Indah (8 min)



SCHOOL

10. SMK Sri Ampang
11. SMK (P) Puteri Ampang
12. The International School of KL (ISKL)
13. Sayfol International School

■ ■ ■ MRT Putrajaya Line ■ ■ ■ MRT Kajang Line ■ ■ ■ KL Monorail Line ■ ■ ■ LRT Ampang Line ■ ■ ■ LRT Kelana Jaya Line ■ ■ ■ Proposed MRT3 Line

RADIUM
BUILDING GOOD

CHANCERY RESIDENCES SALES GALLERY

Lot 1243, Jalan Ulu Klang
55000 Ampang
Kuala Lumpur

T 603 4051 2268
F 603 4050 5518
E enquiry@radiumdevelopment.com



CHANCERY RESIDENCES
SALES GALLERY

+60111 722 5550

chanceryresidences.com

Developer: Idaman Sejiwa (Ampang) Sdn Bhd (201101011792 (939926-H) • Type: SOHO • Developer's License: 30121/07-2027/0120(N) • Validity Period: 18 July 2022 - 17 July 2027 • Advertising Permit: 30121-1/11-2025/0330(A)-(S) • Validity Period: 15 November 2022 - 14 November 2025 • Building Plan Approval No.: BPU30SC20211525 • Approving Authority: Dewan Bandaraya Kuala Lumpur • Tenure: Freehold • Expected Date of Completion: Nov 2027 • Encumbrances: UOB • Total Units: 944 • Price: RM455,000 (Min) - RM1,860,000 (Max) • Bumiputera Discount: 5%
Disclaimer: The information contained herein this material is subject to change and cannot form part of an offer contract. All renderings are artist's impression only. All measurement are approximate. While every reasonable care has been taken in preparing this material, the developer/proprietor cannot be held responsible for any inaccuracy. All the above items are subject to variation, modifications & substitutions as may be required by the Authorities or recommended by the Architect or the Engineer.