

|

|

|

|

|

|

|

|

|

QUINN

|

|

|

|

|

|

|

|

|

Quintessential New Urban Living



Quinn is the new choice for a progressive city lifestyle away from the city centre, yet close to it all. It features 361 residential units designed with resort-style verve, surrounded by nature's rustic wonders. Just next to Sri Rampai LRT and 6 stops from the Golden Triangle, Quinn presents a smarter, more enjoyable opportunity for living well.

It is the quintessential new archetype for city living.





Panoramic View Of
Kuala Lumpur City Centre

A View Above It All

Quinn features a stylish 42-storey tower with layouts to fulfill every living aspiration. It offers breathtaking views of Kuala Lumpur City Centre's skyline and sweeping vistas of the wondrous Quartz Ridge.

Surrounded By
Matured Amenities

3 Levels Of
Lifestyle Facilities

Views Of KL City
And Quartz Ridge



Unhindered View Of
Klang Gates Quartz Ridge

Quinn On The Hill

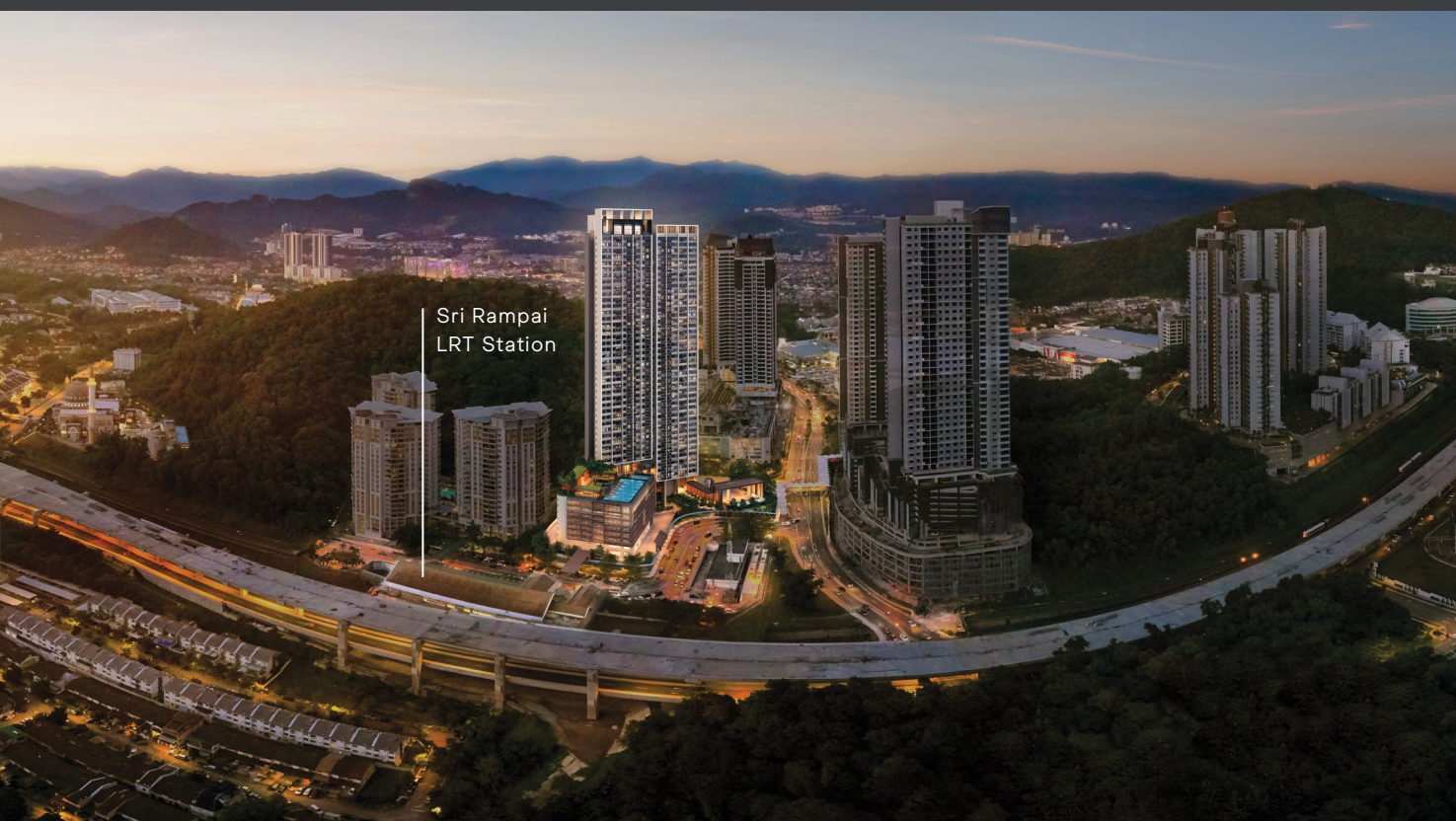
Connected To
6 Major Highways

300m To Wangsa Walk
Mall Via Link Bridge

100m To Sri Rampai
LRT Station

Next To The City, Close To Nature

Everything you need is right at home or within easy reach. Quinn gives you access to the most exciting lifestyle pursuits as well as a setting for more laid-back living. Wangsa Maju features great amenities for families, while you are surrounded by established neighbourhoods with easy connectivity to Kuala Lumpur City Centre.



AT THE EDGE OF IT ALL

Wangsa Maju is a tranquil and convenient neighbourhood that features parks, shopping spots, educational institutions, local and international food as well as amenities for families. Quinn is connected to Wangsa Walk Mall via a 300m covered Link Bridge for more lifestyle choices.

A HIGH-LIFE IN THE CITY

Quinn is 100m from Sri Rampai LRT Station with access to Kuala Lumpur's best shopping, fashion and entertainment. The capital's financial district is close enough for short commutes. Enjoy the local food scene or zip into town for international cuisine.



Avenues For Leisurely Escape

Quinn is well equipped with 3 levels of facilities with the wonders of nature at your doorstep.



Ground Level

The ground level is a spacious area for children to play and visitors to lounge.

- | | | | | | |
|---|--------------------------|---|-----------------------|----|-----------------------|
| 1 | Guardhouse | 5 | Children's Playground | 9 | Management Office |
| 2 | Drop-Off Pavilion | 6 | Childcare Centre | 10 | Residents Door Access |
| 3 | Cascading Water Features | 7 | Guest Waiting Foyer | | |
| 4 | Water Features | 8 | Lobby Lounge | | |

Level 3 Podium

The Podium provides leisure, recreation and entertainment for the entire family.



- | | | | | | |
|----|----------------|----|------------------|----|-----------------------|
| 11 | Infinity Pool | 17 | Gourmet Pavilion | 23 | Residents Dining Area |
| 12 | Kids Pool | 18 | BBQ Pavilion | 24 | Reading Room |
| 13 | Outdoor Shower | 19 | BBQ Pit | 25 | Launderette |
| 14 | Sundeck | 20 | Alfresco Lounge | 26 | Changing Room |
| 15 | Seating Alcove | 21 | Function Room | 27 | Surau |
| 16 | Central Lawn | 22 | Outdoor Terrace | | |



Infinity Pool



BBQ Pavilion

Level 42 Sky Roof

The Sky Roof offers a Sky Gym with a view, Sky Gardens for relaxing and a Hot Desking Area for private work sessions.



- | | | | | | |
|----|----------------|----|------------------|----|-------------------------|
| 28 | Sky Gym | 30 | Chill Out Lounge | 32 | Hot Desking Space |
| 29 | Viewing Lounge | 31 | Reading Nook | 33 | Male & Female Restrooms |

Layouts For Every Aspiration

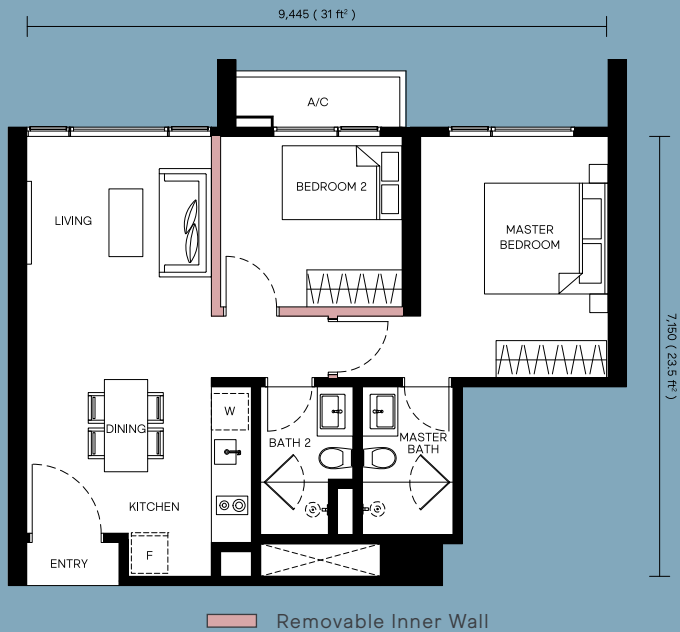
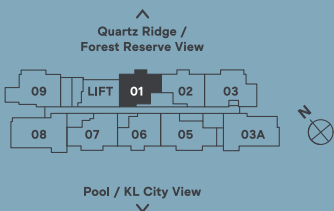
Crafted For Luxury And Natural Exuberance

Quinn is designed with uncompromising detail for style and comfort, with a focus on creating a resort ambience. Quinn offers layout choices from 538 – 1,070 sf, with 1 to 4 bedrooms to fulfill every lifestyle arrangement.

B1

ROOM
2 bedrooms
2 bathrooms

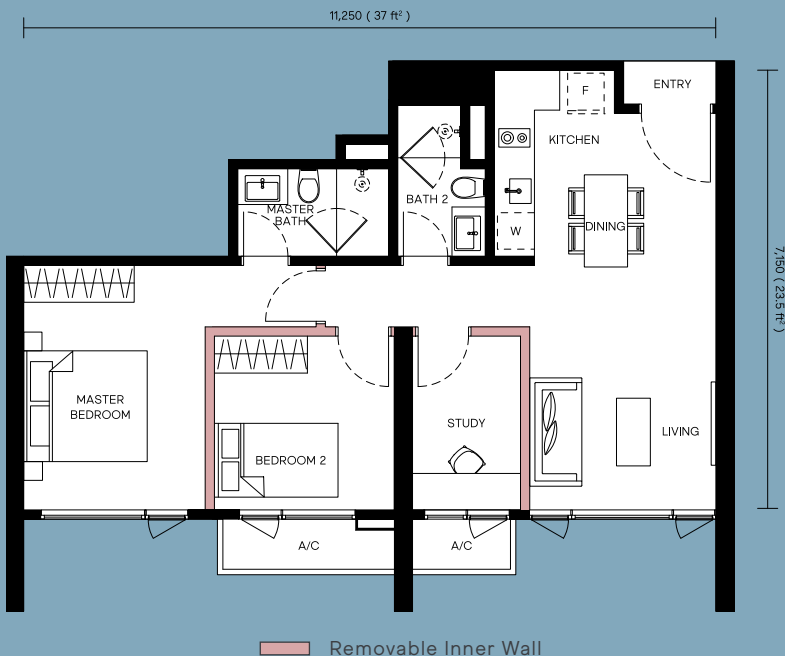
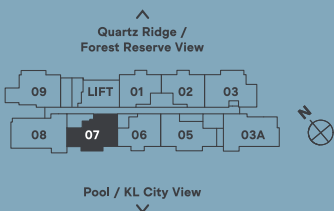
BUILT-UP
689 ft² / 64 m²
Level 10 to 22, 23A to 41



B4

ROOM
2 bedrooms + 1 study
2 bathrooms

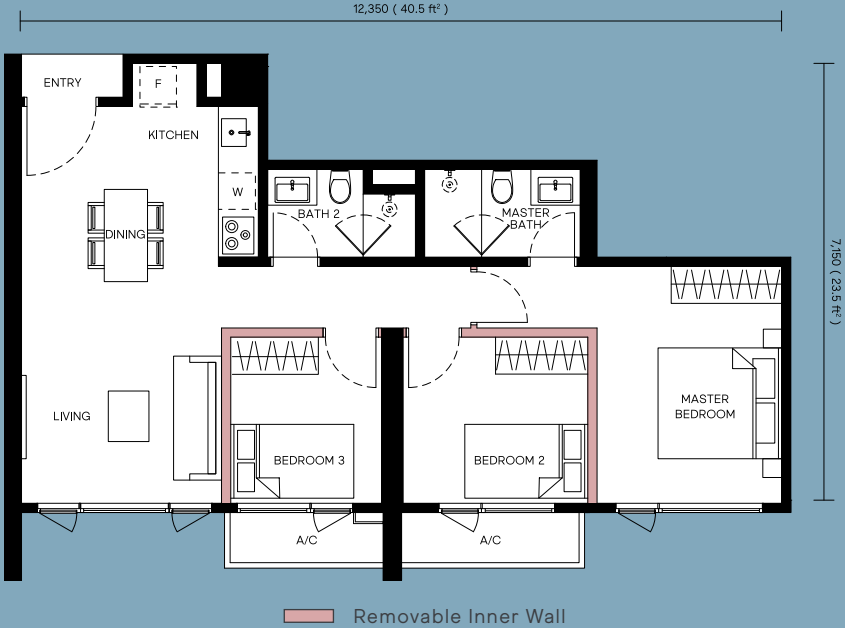
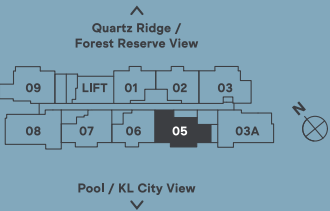
BUILT-UP
786 ft² / 73 m²
Level 5 to 41



C1

ROOM
3 bedrooms
2 bathrooms

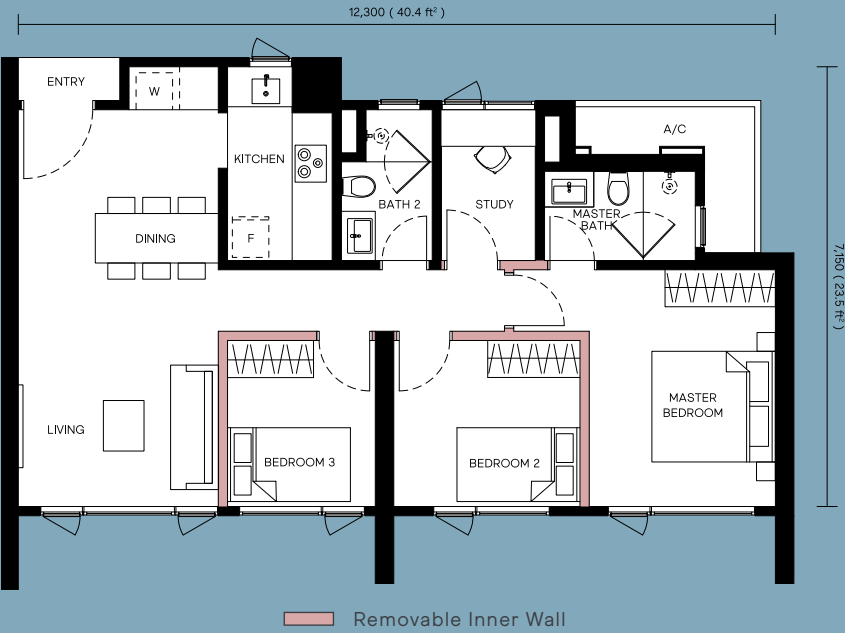
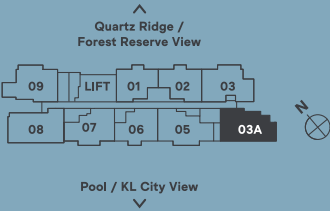
BUILT-UP
850 ft² / 79 m²
Level 1 to 13A



C5

ROOM
3 bedrooms + 1 study
2 bathrooms

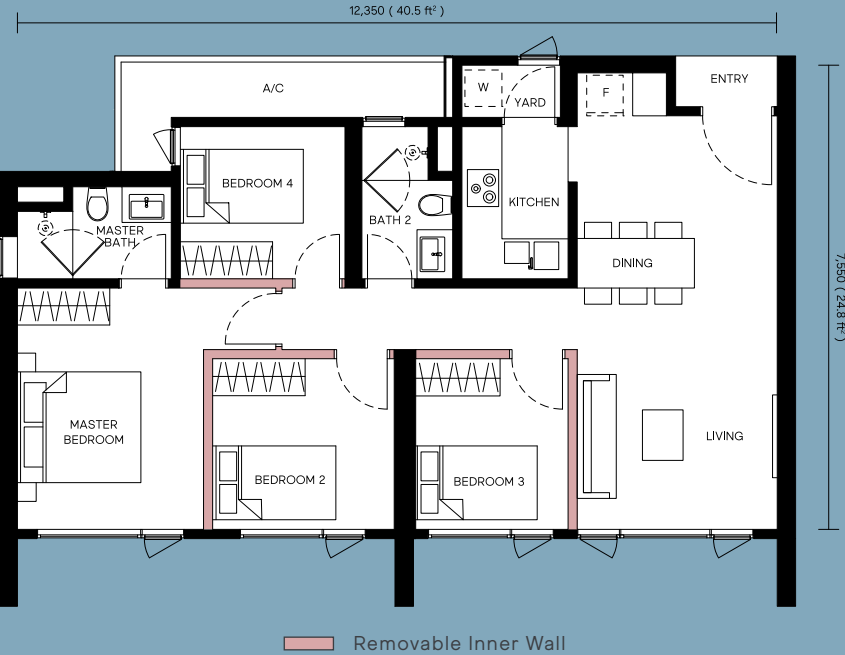
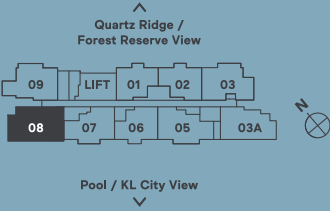
BUILT-UP
926 ft² / 86 m²
Level 2, 3A, 6, 8, 10, 12,
13A, 16, 18, 20, 22, 23A, 26,
28, 30, 32, 33A, 36, 38, 40



D1

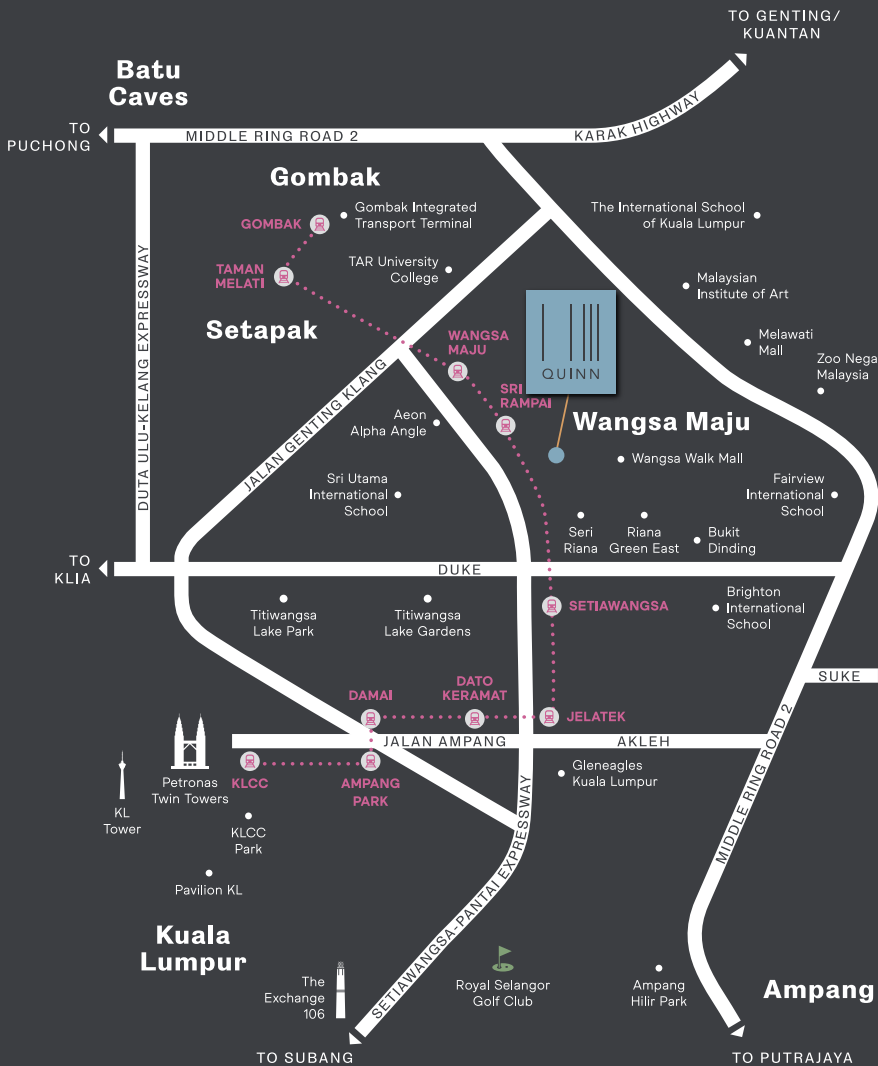
ROOM
4 bedrooms
2 bathrooms

BUILT-UP
1,023 ft² / 95 m²
Level 28, 30, 32,
33A, 36, 38, 40



Unparalleled Connectivity

With easy access to LRT and other public transit, Quinn is in a strategic location just 8km from Kuala Lumpur City Centre. It is well connected with 6 highways nearby like DUKE, MRR2, AKLEH, Karak Highway and the upcoming SPE and SUKE.



TRANSPORTATION

- Sri Rampai LRT Station **100m**
- Wangsa Maju LRT Station **1.5km**
- Gombak Integrated Transport Terminal **4.6km**



EDUCATION

- Fairview International **2.7km**
- Sri Utama International **3km**
- Tunku Abdul Rahman University College **3.8km**



SHOPPING

- Wangsa Walk Mall **300m**
- Aeon Big Wangsa Maju **800m**
- Melawati Mall **2.7km**



HEALTHCARE

- Columbia Asia Hospital **4.7km**
- Gleneagles Hospital **5.4km**
- KPJ Ampang Puteri Specialist Hospital **6.8km**



LRT Station

MCL Land
A Hongkong Land company

QUINN SALES GALLERY

11, Jalan Wangsa Delima, Wangsa Maju
53300 Kuala Lumpur, Malaysia
Waze: Quinn Sales Gallery

FOR SALES ENQUIRIES, PLEASE CALL

1800 88 0088
quinn.com.my



All information contained herein is subject to changes without notification as may be required by relevant authorities and cannot form part of an offer and contract. Whilst every care has been taken in providing this information, the Developer nor its agents cannot be held liable for variations or changes that may be made from time to time. All illustration and pictures are artist's impression only. The items are subject to variations, modifications and substitutions as may be recommended by the relevant Approving Authorities and/or consultants.

Developer: MCL Land (Quinn) Sdn. Bhd. (Company Registration No. 494602-A) Lot G-93A, Wangsa Walk Mall, Wangsa Avenue, No. 9, Jalan Wangsa Perdana 1, Bandar Wangsa Maju, 53300 Kuala Lumpur, Malaysia. Tel: 603 4142 8888 / Fax: 603 4142 6900 • Developer's License No.: 8946-3/09-2022/0636(L) • Validity Period: 26 September 2020 - 25 September 2022 • Advertising & Sales Permit No.: 8946-3/09-2022/0636(P) • Validity Period: 26 September 2020 - 25 September 2022 • Approving Authority: Dewan Bandaraya Kuala Lumpur • Building Plan Approval No.: BP U2 OSC 2019 2215 (29) • Expected Date of Completion: September 2023 • Tenure of Land: Leasehold (Expire on 28 May 2097) • Land Encumbrances: Nil. • Total No. of Units: 361 • No. of Units by Type: Type A: 27 Units, Type B: 137 Units, Type C: 182 Units, Type D: 15 Units • Property Type: Apartment Suite • Selling Price by Type: Type A: RM491,800 (min) - RM551,800 (max), Type B: RM631,800 (min) - RM775,800 (max), Type C: RM753,800 (min) - RM919,800 (max), Type D: RM934,800 (min) - RM1,211,800 (max) • Bumiputera Discount: 5% • THIS ADVERTISEMENT HAS BEEN APPROVED BY NATIONAL HOUSING DEPARTMENT