

SOUTHKEY

NADI

RESIDENCES

THE RHYTHM OF HOME

Welcome to the Heartbeat of Southkey City

Gravitate to the energetic pulse of Southkey City, Johor Bahru's dynamic lifestyle hub.

Live close to convenience and endless possibilities! Your neighborhood offers a surprising variety of options all within a short distance. Whether you're looking to treat yourself to some retail therapy, find entertainment for the whole family, or plan a fun day out, you won't have to go far.

500M
walking distance to The Mall, Mid Valley Southkey via pedestrian walkway

2.0KM
to Eastern Dispersal Link (EDL) Expressway

4.5KM
to Sultan Iskandar CIQ Complex via Eastern Dispersal Link (EDL) Expressway

5.5KM
to North-South Expressway via Eastern Dispersal Link (EDL) Expressway



330-acre

Urban Lifestyle Development
in Johor Bahru



32-acre

The Mall, Mid Valley Southkey



18-acre

Thoughtfully Planned
Southkey Majidee Central Park



4 Major Roads & Highways

Tebrau Highway
Eastern Dispersal Link (EDL) Expressway
Johor Bahru East Coast Parkway
Jalan Bakar Batu



Where Serenity of Home Meets Utmost Functionality

Amidst a bustling city, home will always be a place of peace for you and the family.



395 UNITS
Low-Density Development



DUAL-WING DESIGN
Comfortable Living Environment



OPTIMIZED LAYOUT
Space-Efficient Design



BRIGHT & BREEZY
Natural Daylight and Ventilation



24/7 SECURITY
3-Tier Security with Access Card



*Artist Impression Only



Find your daily rhythm
in spaces designed with
practicality and aesthetics.

*Artist Impression Only



Where nature's symphony vibes harmoniously with the city.

**Artist Impression Only*

Subtle but Impactful Eco-friendly Practices for Sustainability

Balance your connection to nature and the urban lifestyle with NADI's green initiatives.

The best of both worlds made accessible to your lifestyle. With a selection of eco-centric products and facilities, we ensure that you can play a role in conserving the environment through simple, everyday actions.



**Water Saving
Features**

Save water and the planet with efficient fixtures.



**EV Charging
Ports**

Charge your electric vehicle for a greener commute.



**Low VOC
Material & Paint**

Breathe easy with healthy, low-VOC materials.



**Dedicated
Bicycle Park**

Secure and convenient bike parking for all cyclists.



**Rainwater Harvesting
System**

Conserve water with rainwater collection.



**Energy Saving
Lights**

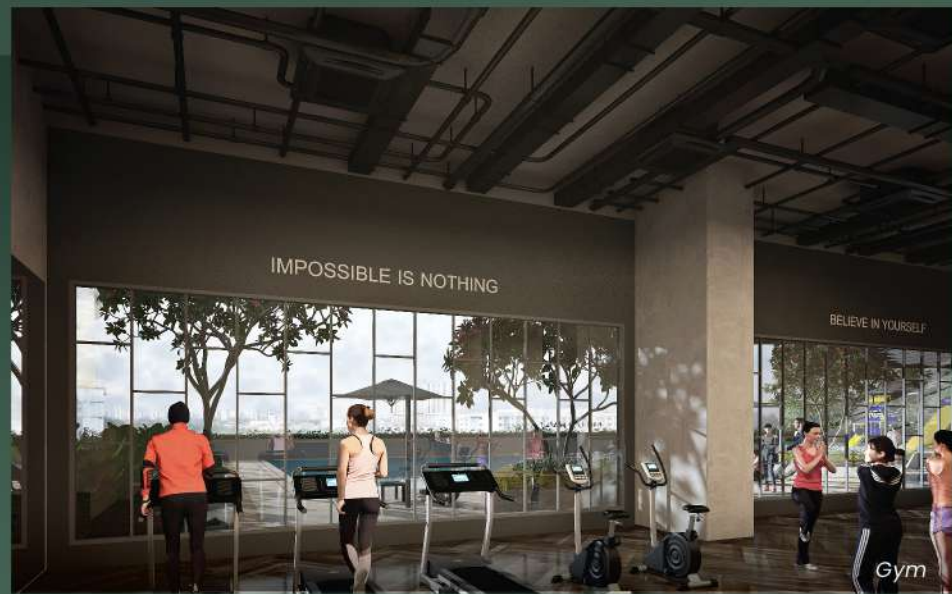
Reduce energy use and costs with efficient lighting.

Flow to a Mindful and Healthy Way of Life

A balance of nature and facilities to nurture your wellbeing.

Immerse yourself in a tranquil environment where nature and modern amenities come together to support your well-being. With a serene river nearby and lush greenery surrounding you, it's easy to find peace and tranquility.

The serviced residences offers thoughtfully crafted facilities that enhance your comfort. Whether you seek relaxation or rejuvenation, these spaces provide the perfect setting to recharge and refresh.



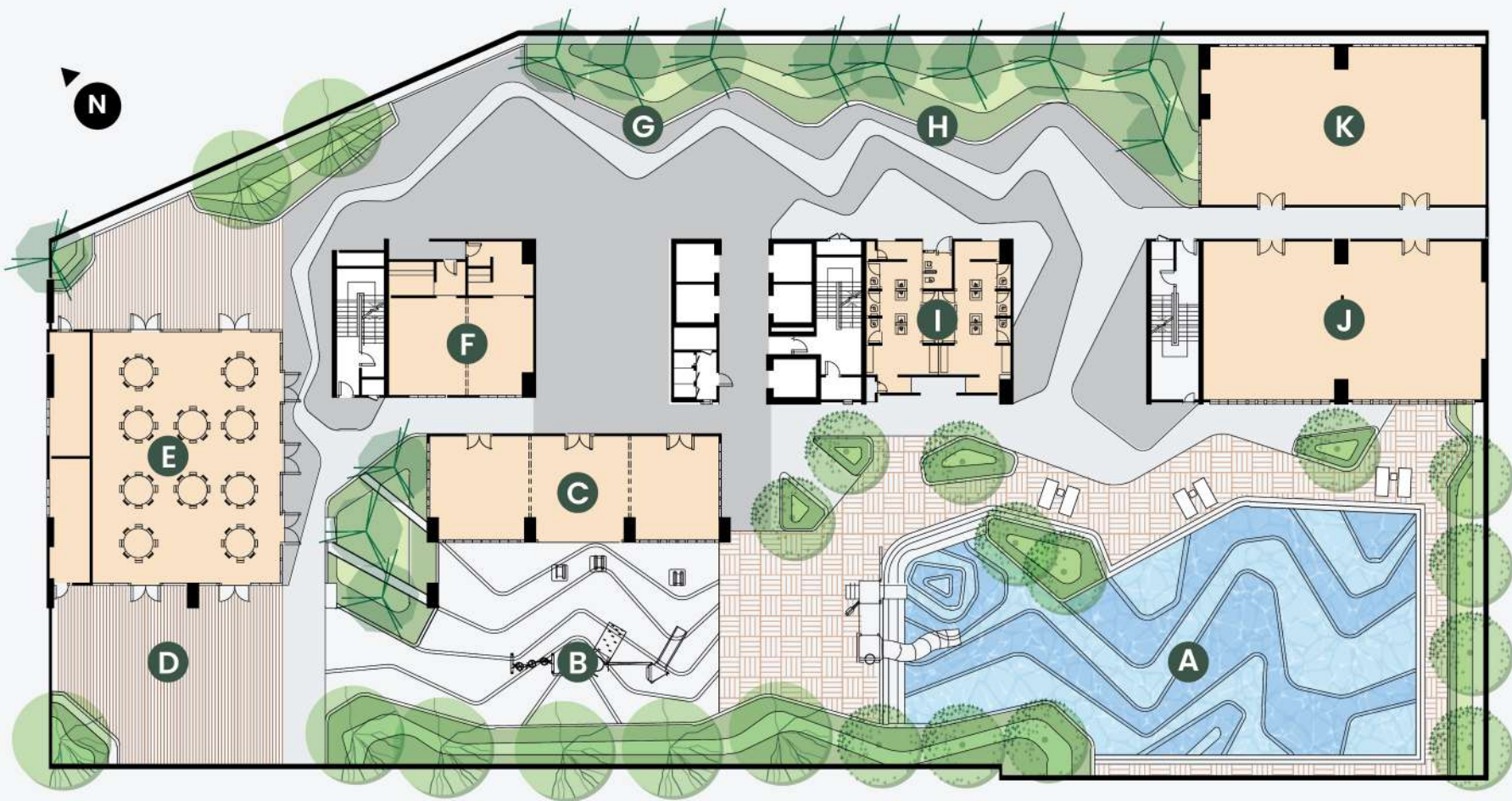
Facilities & Amenities

Level 1

- | | |
|-------------------|-----------------------------------|
| Bicycle Park | Dedicated Waiting / Drop-Off Bays |
| EV Charging Ports | Dedicated Car Wash Bays |
| Retail Outlets | |

Level 8

- | | | |
|--|---------------------------------|---|
| A Swimming Pool c/w Wading Pool | E Multipurpose Hall | I Changing Room |
| B Children Playground | F Surau | J Gym |
| C Children Multipurpose Room | G Multipurpose Open Area | K Multipurpose Lounge & Reading Room |
| D BBQ Area | H Open Lounge | |

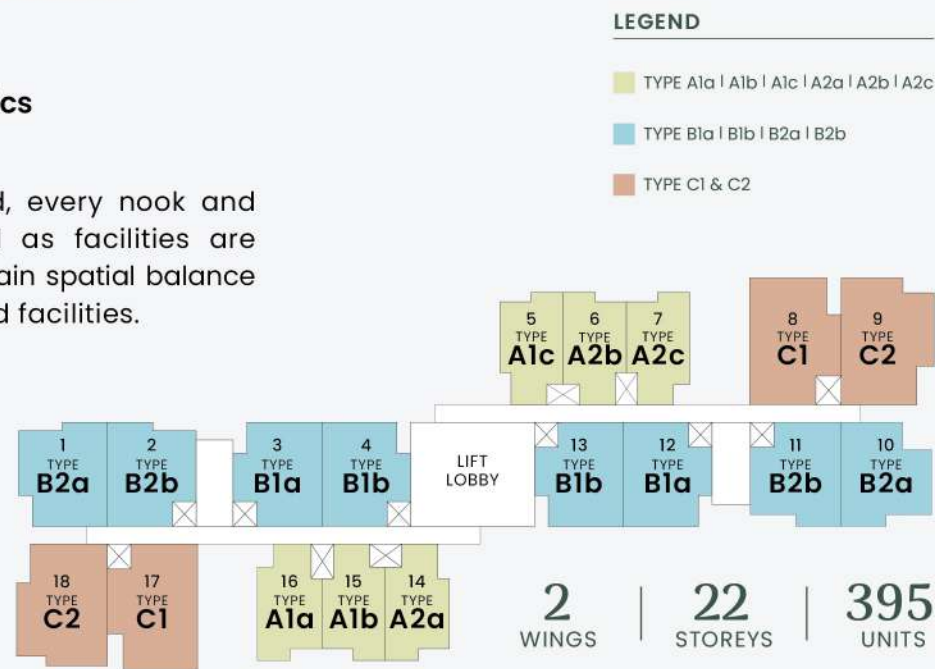


**Every reasonable care has been taken in preparing this brochure. All measurements are approximate and illustrations are artist impression only. All statements are believed to be correct at this point of printing but not to be regarded as elements or representations of fact.*

Discover Your Rhythm of Home Right Here

A seamless blend of aesthetics and purpose-driven design.

Built for the urbanite in mind, every nook and corner within a unit as well as facilities are thoughtfully planned to maintain spatial balance between blocks, levels, units, and facilities.

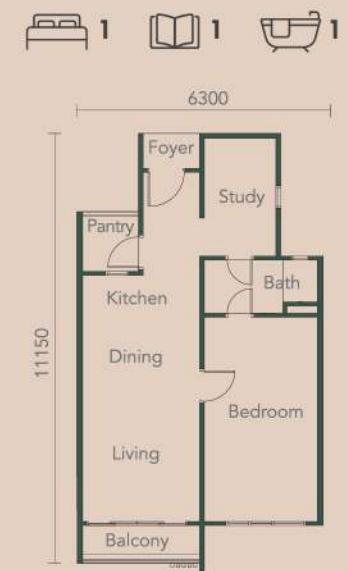


SPECIFICATIONS

Structure	Reinforced Concrete Frame
Wall	Brick Wall / Concrete Wall
Roof Covering	Concrete Slab
Ceiling	Skim Coat to Reinforced Concrete Slab Soffit
Windows	Aluminium Frame Glass Casement Windows / Aluminium Frame Top Hung Windows
Doors	Main Door Ms Frame Fire Rated Door Bathroom Ms Frame Flush Door Balcony Door Aluminium Frame Glass Sliding Door Other Doors Ms Frame Flush Door
Wall Finishes	Generally Paint on Skim Coat Walls Ceramic Wall Tiles at 1500mm Height to Kitchen Ceramic Wall Tiles at Full Height to Bathroom
Floor Finishes	Living & Dining: Tiles Bedrooms: Vinyl

Sanitary and Plumbing	TYPE A1 & A2	TYPE B1 & B2	TYPE C1	TYPE C2
WC - Pedestal	1	2	2	2
Wash Basin	1	2	2	2
Shower Head	1	2	2	2
Bib Tap	2	3	3	3
Kitchen Sink	1	1	1	1
Kitchen Sink Tap	1	1	1	1
Electrical Installation				
Lighting Point	13	14	17	18
Ceiling Fan Point	2	3	3	4
Wall Fan Point	1	-	1	-
13A. Power Point	13	13	15	15
15A. s/s/o for Air-Cond	3	3	4	4
SMATV Point	1	1	1	1
Heater Point	1	2	2	2
Bell Push Point	1	1	1	1
Fibre Wall Point	1	1	1	1

TYPE A1a | A1b | A1c
649 sq. ft.



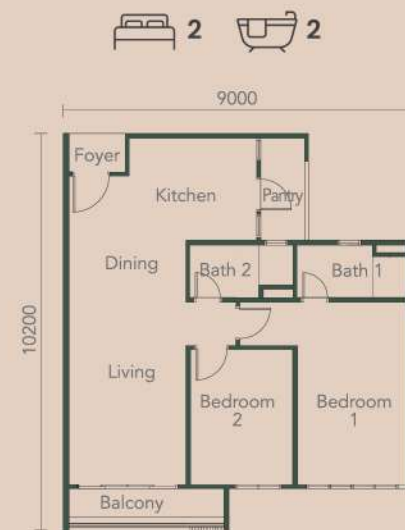
TYPE A2a | A2b | A2c
649 sq. ft.



TYPE B1a & B1b
854 sq. ft.
(inc. 14 sq.ft. air-cond ledge)



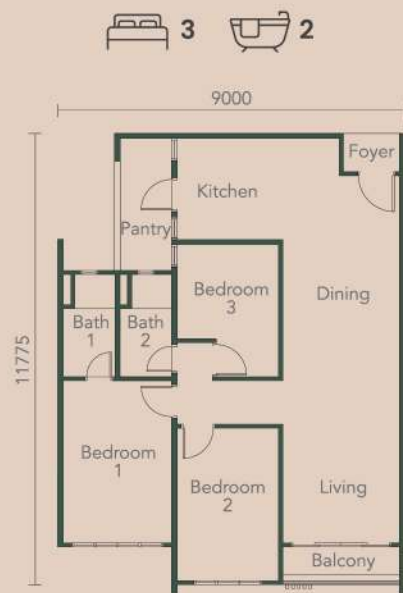
TYPE B2a & B2b
854 sq. ft.



TYPE C1
1050 sq. ft.
(inc. 14 sq.ft. air-cond ledge)

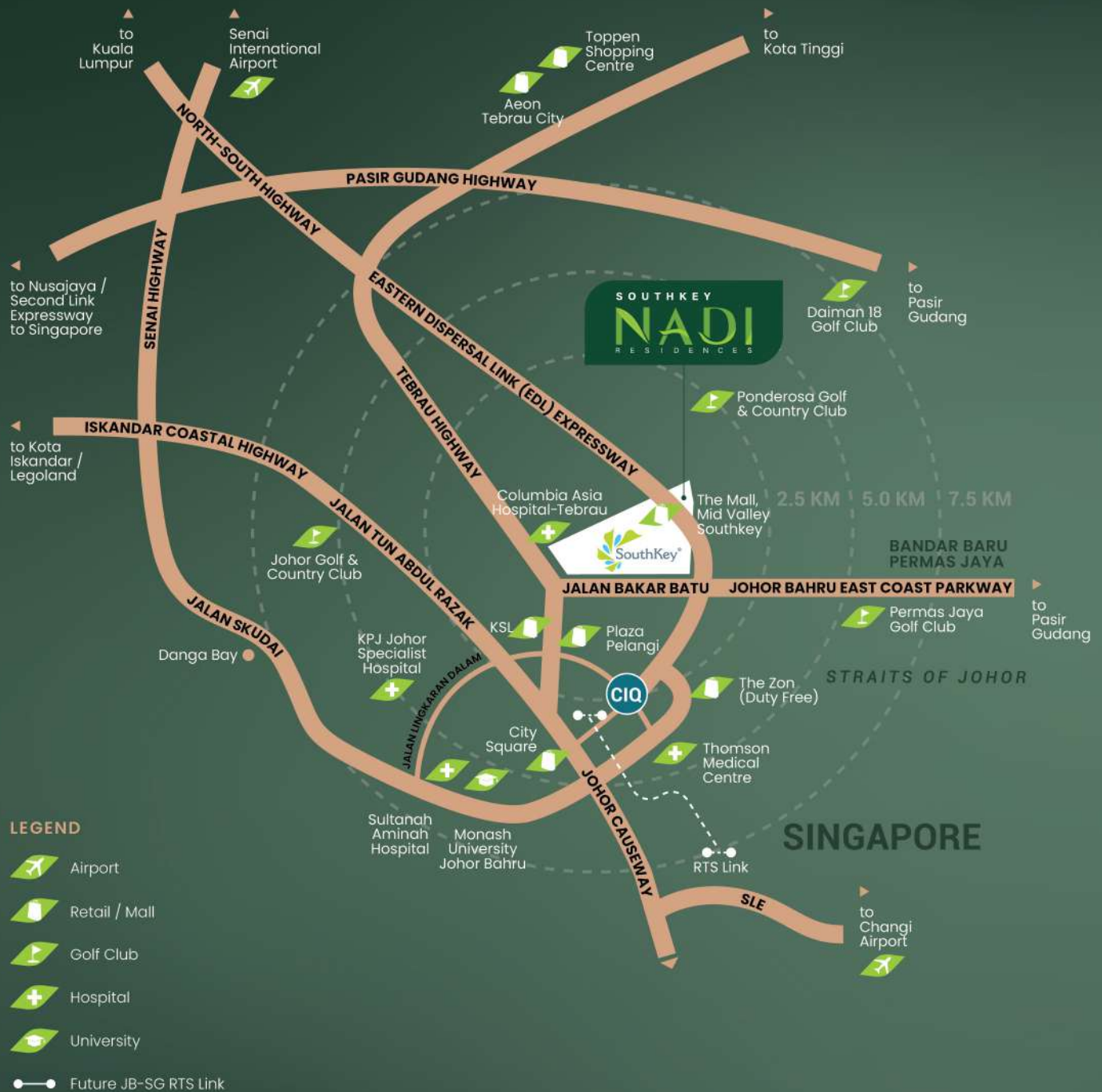


TYPE C2
1050 sq. ft.



*Every reasonable care has been taken in preparing this brochure. All measurements are approximate and illustrations are artist impression only. All statements are believed to be correct at this point of printing but not to be regarded as elements or representations of fact.

Prime and Central Location



VISIT OUR SALES GALLERY

No. 3, Persiaran Southkey 1, Southkey, 80150 Johor Bahru, Johor, Malaysia.

www.southkey.com.my [SouthkeyProperties](#) [southkey.city](#)

Book An Appointment Today!

+607 335 7373

+6018 285 8000

• Nama Pemaju: Southkey City Sdn Bhd 200201013527 (581190-A) • Nombor Lesen Pemaju: 13119/10-2027/1279(R) • Tempoh Sah Laku: 03 Oktober 2020 - 02 Oktober 2027 • Nombor Permit Iklan dan Jualan: 13119-2/08-2027/0743(A)-(S) • Tempoh Sah Laku: 19 Ogos 2024 - 18 Ogos 2027 • Pihak Berkuasa Berkenaan Yang Meluluskan Pelan Bangunan: Majlis Bandaraya Johor Bahru • Nombor Rujukan Pelan Bangunan: MBJB/U/2022/14/BGN/156/RP(16) • Jenis Pegangan Tanah: Pajakan (Tarikh Luput: 21/02/2100) • Tarikh Pemajuan Perumahan Dijangka Siap: Julai 2027 • Bebanan Tanah: Dicagarkan kepada AmBank Islamic Berhad • Jenis Hartanah: Pangapuri Servis • Nama Pemajuan: Residensi NADI Southkey • Tempat Letak Kereta: 1 Unit: 1-2 petak • Jumlah Bilangan Unit: 395 • Harga Jualan: Min. RM422,000.00 - Maks. RM694,000.00 • 15% Diskaun Bumiputera. IKLAN INI TELAH DILULUSKAN OLEH JABATAN PERUMAHAN NEGARA