

FREEHOLD



VISTA SENTUL
RESIDENCES
by Platinum Victory

The logo for Vista Sentul Residences consists of a stylized 'V' shape with a location pin icon inside it. Below the logo, the text 'VISTA SENTUL RESIDENCES' is written in a bold, black, sans-serif font, and 'by Platinum Victory' is written in a smaller, lighter font underneath.

A reckon address for a
strategic living

0111 722 5565
www.platinumvictory.com

  Platinum Victory  Vista Sentul Sales Gallery

Vista Sentul Sales Gallery

2-1, Level 2, Jalan Sinar Sentul, Sinar Sentul Commercial Centre,
Sentul, 51100 Kuala Lumpur, Wilayah Persekutuan Kuala Lumpur

Disclaimer: All information contained herein is subject to changes without notification as may be required by relevant authorities and cannot form part of an offer and contract. Whilst every care has been taken in providing this information, the owner, developer and managers cannot be held liable for variations. All illustration and pictures are artist's impression only. The items are subject to variation, modifications and substitutions as may be recommended by the relevant Approving Authorities. All plans/information contained herein is not final and shall be based on the approved Building Plans by the appropriate authorities.

Cost Convenience and Liveability

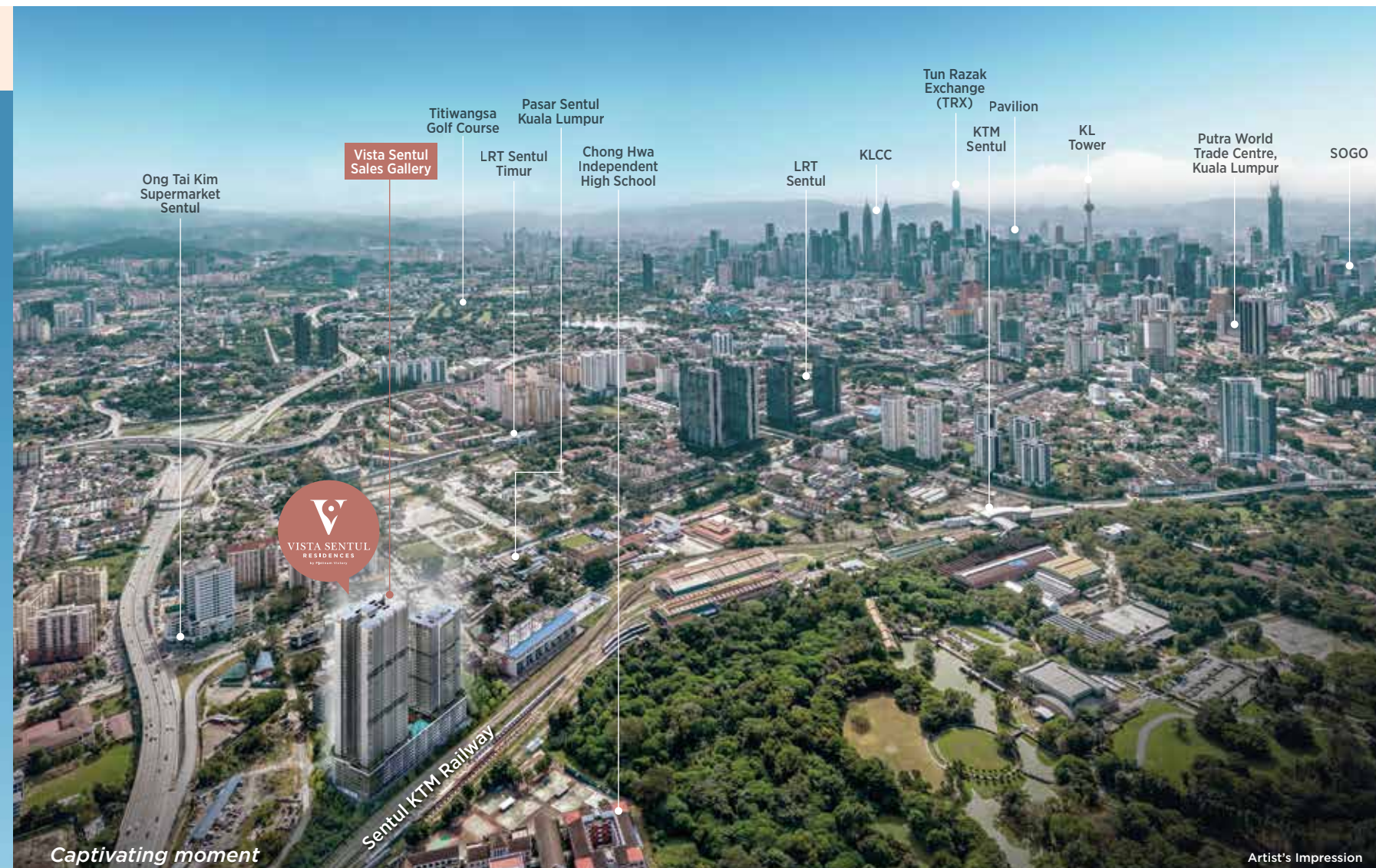
Vista Sentul Residences offers **FREEHOLD** vertical living with a price that is made attainable for city living. The modest-cost home leverages on its mature surroundings to provide residents with great accessibility and convenience in getting around and reaching for amenities.



Majestic moment

Vista Sentul Residences

Artist's Impression



Captivating moment

Vista Sentul Residences Aerial View

Artist's Impression

One of the finest in Connectivity & Accessibility



Within 2km to Sentul Komuter, LRT Sentul Timur & LRT Sentul



Within 7 km to KLCC, Pavilion & KL Sentral



Surrounded by Education Institutions



Major access to Duta-Ulu Kelang Expressway



Grandeur moment

Main entrance

Artist's Impression

Above Ground Dynamic

Vista Sentul Residences facility deck comprises communal facilities vital for residents to nurture a balanced lifestyle. It is a shared platform where the community flocks for one common pursuit - enjoying life gracefully.



Level 8 Facilities Podium

- 1 Surau
- 2 Multifunction Room
- 3 Gym
- 4 Laundrette
- 5 Convenience Store
- 6 Games Room
- 7 AV Room
- 8 Yoga/ Dancing Studio
- 9 Children Playroom
- 10 BBQ Terrace
- 11 Community Herb Garden
- 12 Sand Pit
- 13 Kids Playscape
- 14 Adults Playscape
- 15 Outdoor Fitness
- 16 Pavilion
- 17 Pool Deck
- 18 Wading Pool
- 19 Swimming Pool
- 20 Lounge
- 21 Library
- 22 Outdoor Deck
- 23 Multipurpose Room
- 24 Meeting Room
- 25 Cafe/ Restaurant

TYPE A/A(M)

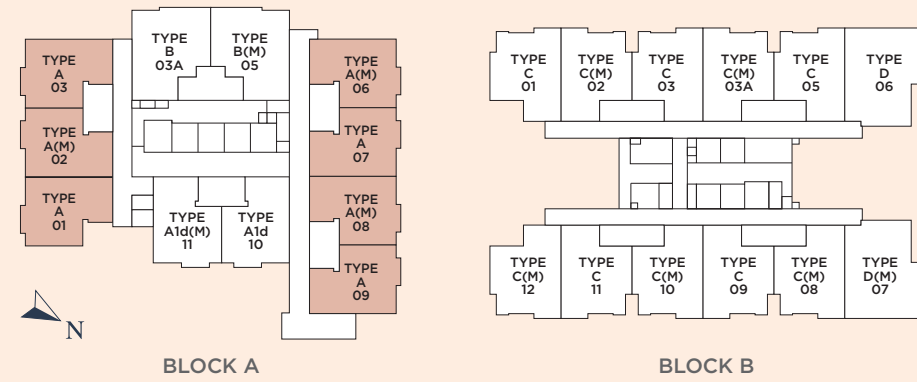
2 BEDROOMS | 2 BATHROOMS | 689 SQ.FT.



A (M)

A

TYPICAL STOREY PLAN



BLOCK A

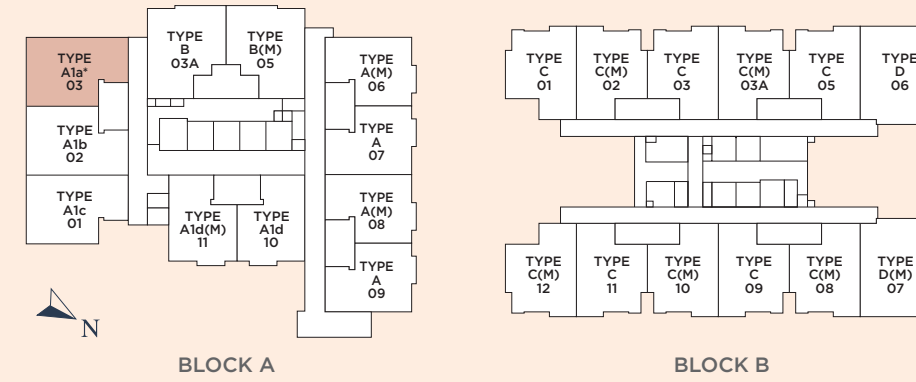
BLOCK B

TYPE A1a

2 BEDROOMS | 2 BATHROOMS | 807 SQ.FT.



TYPICAL STOREY PLAN



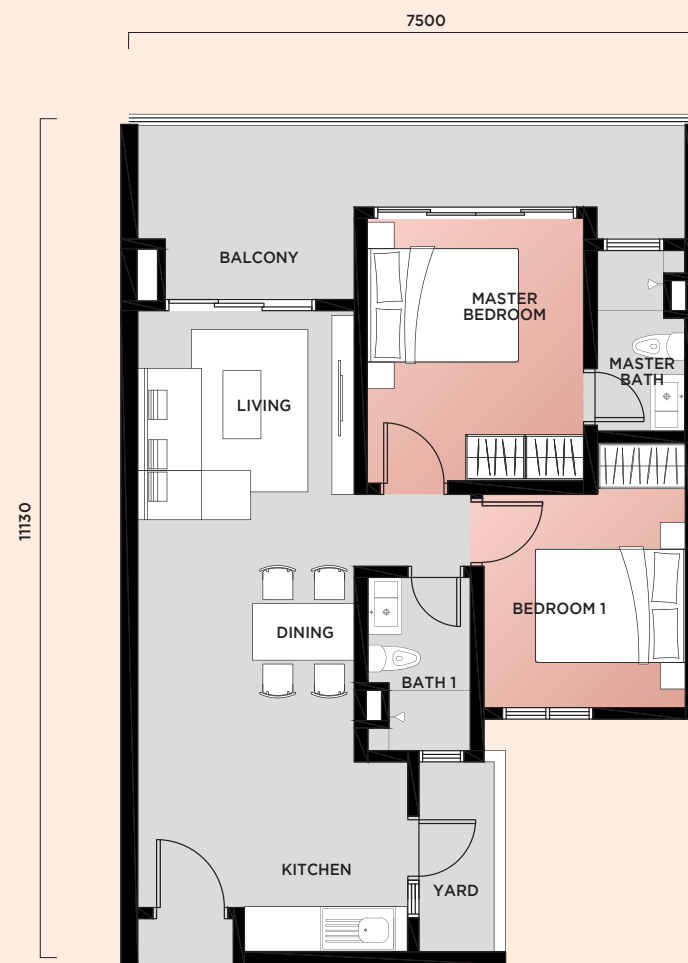
BLOCK A

BLOCK B

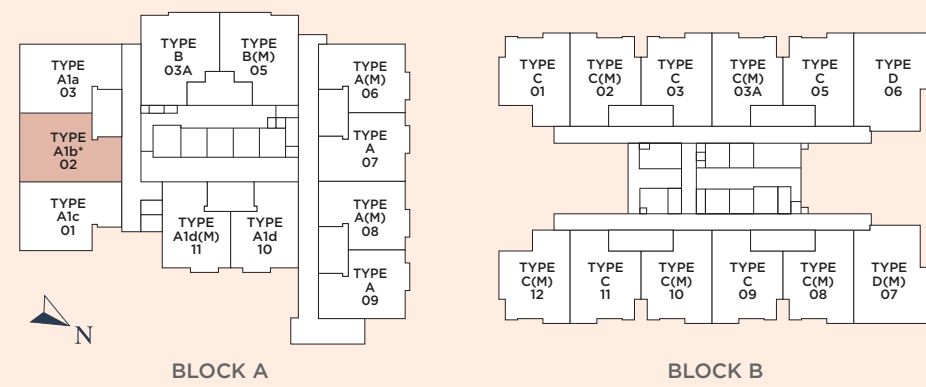
*Type A1a is only available on Level 9

TYPE A1b

2 BEDROOMS | 2 BATHROOMS | 807 SQ.FT.



TYPICAL STOREY PLAN



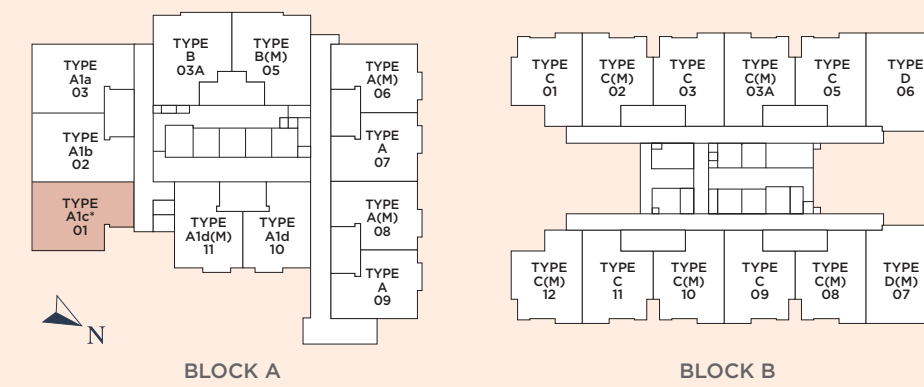
*Type A1b is only available on Level 9

TYPE A1c

2 BEDROOMS | 2 BATHROOMS | 807 SQ.FT.



TYPICAL STOREY PLAN



*Type A1c is only available on Level 9

TYPE A1d/A1d(M)

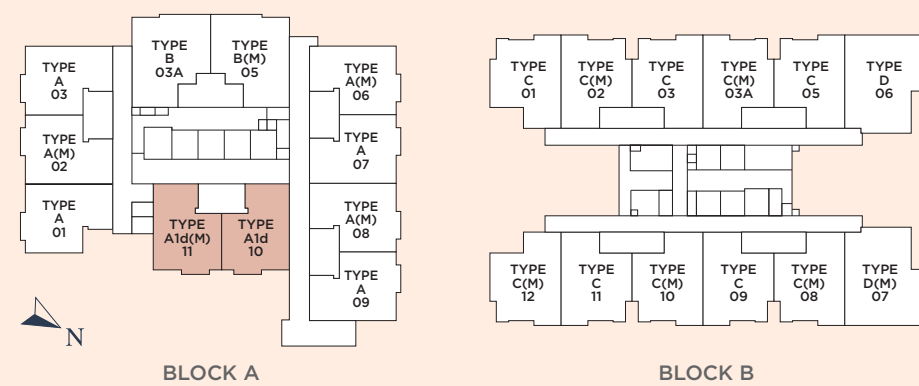
2 BEDROOMS | 2 BATHROOMS | 689 SQ.FT.



A1d

A1d (M)

TYPICAL STOREY PLAN

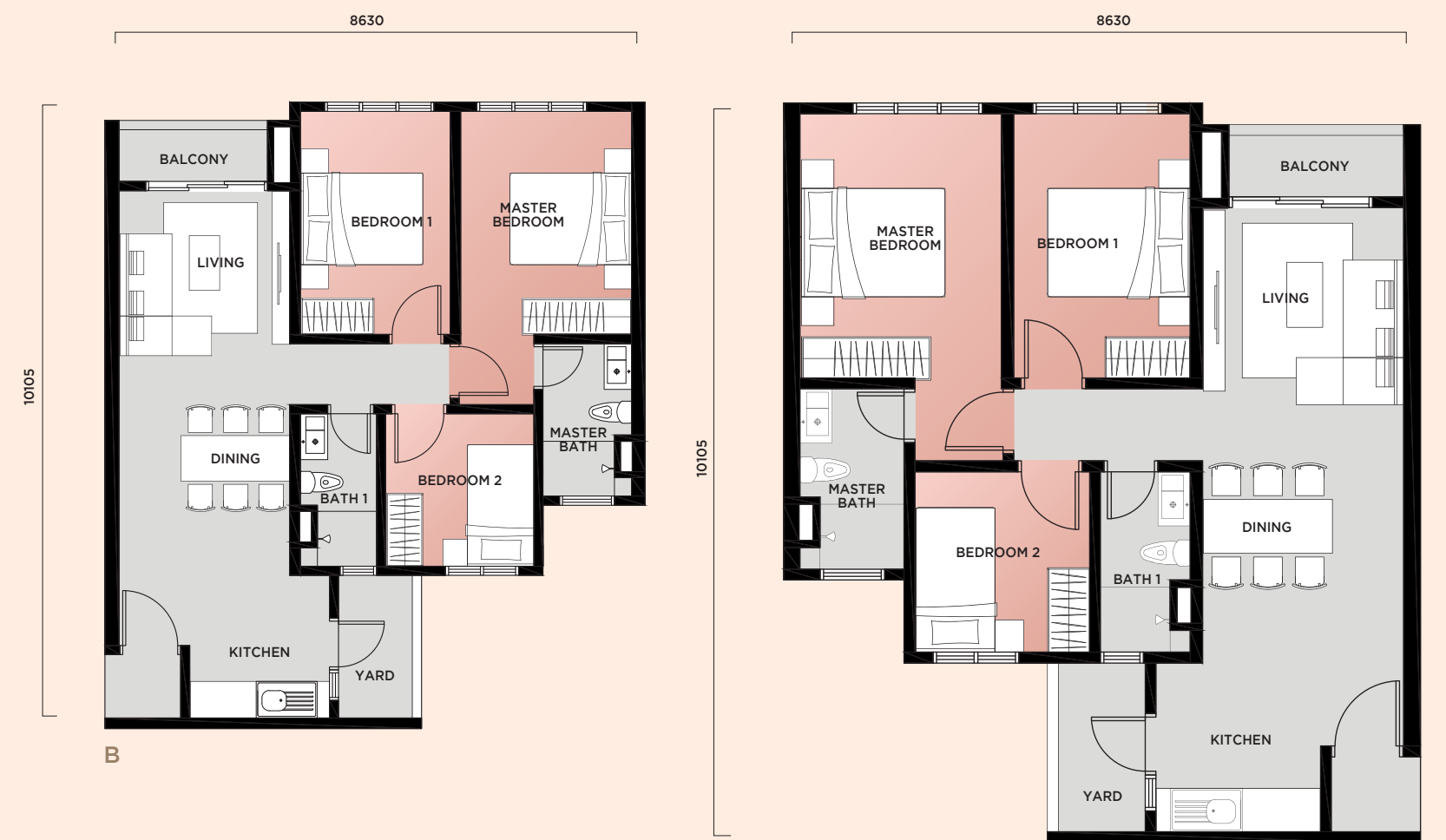


BLOCK A

BLOCK B

TYPE B/B(M)

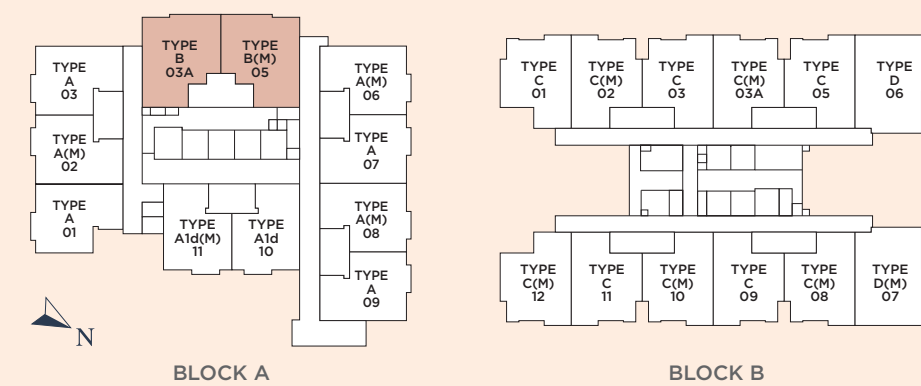
3 BEDROOMS | 2 BATHROOMS | 818 SQ.FT.



B

B (M)

TYPICAL STOREY PLAN



BLOCK A

BLOCK B

TYPE C/C(M)

3 BEDROOMS | 2 BATHROOMS | 958 SQ.FT.



C (M)

C

TYPE D/D(M)

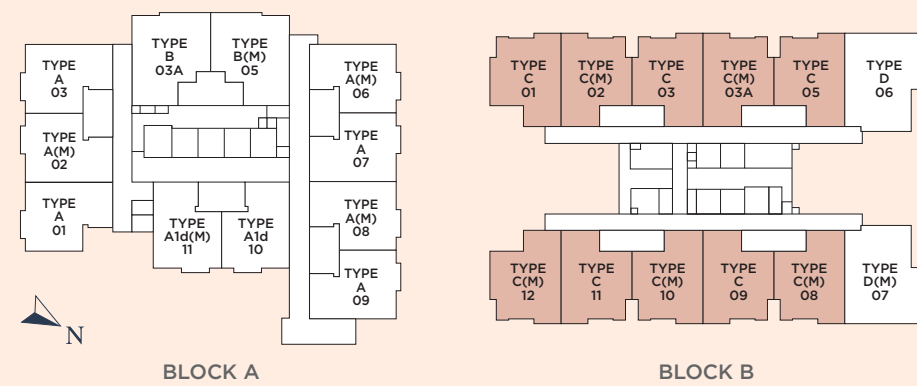
3 BEDROOMS | 3 BATHROOMS | 1,216 SQ.FT.



D

D (M)

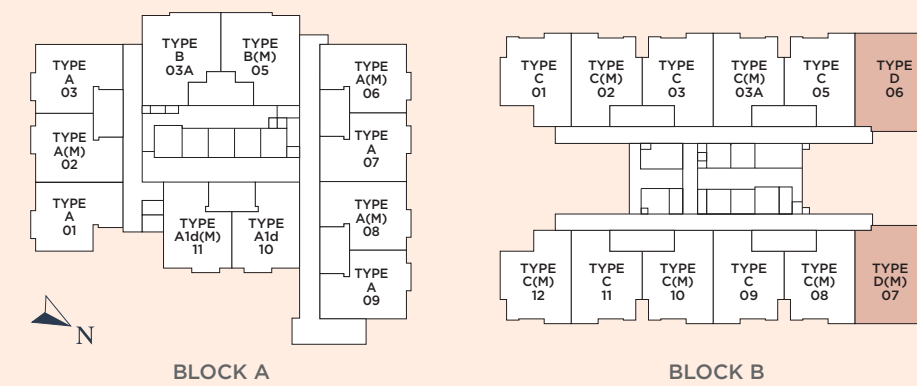
TYPICAL STOREY PLAN



BLOCK A

BLOCK B

TYPICAL STOREY PLAN



BLOCK A

BLOCK B

Specifications

Structure	Reinforced Concrete Frame	
Wall	Masonry Brick/ Concrete Wall/ Light weight Block & Panel	
Wall Finishes	Ceramic Tiles	- Kitchen: 1500mm Height - All Bathrooms: Ceiling Height
	Skim Coat & Paint Finish	- All Other Walls
Floor Finishes	Quality Tiled	- Foyer/ Living/ Dining/ Bedrooms/ Kitchen/ Bathrooms/ Yard/ Balcony
	Cement Render	- AC Ledge
Window	Aluminium Framed Window with Glass	
Door	Fire Door/ Timber Door/ Plywood Flush Door/ Aluminium Framed Sliding Glass Door	
Locks	Quality Locksets	
Ceiling Finishes	Skim Coat & Paint	- All Ceilings
	Plaster Ceiling	- All Bathrooms
Roof	Reinforced Concrete Roof/ Metal Decking Roof	

TYPE	A/ A(M)/ A1d/ A1d(M)	A1a/ A1b/ A1c	B/ B(M)	C/ C(M)	D/ D(M)
------	-------------------------	------------------	---------	---------	---------

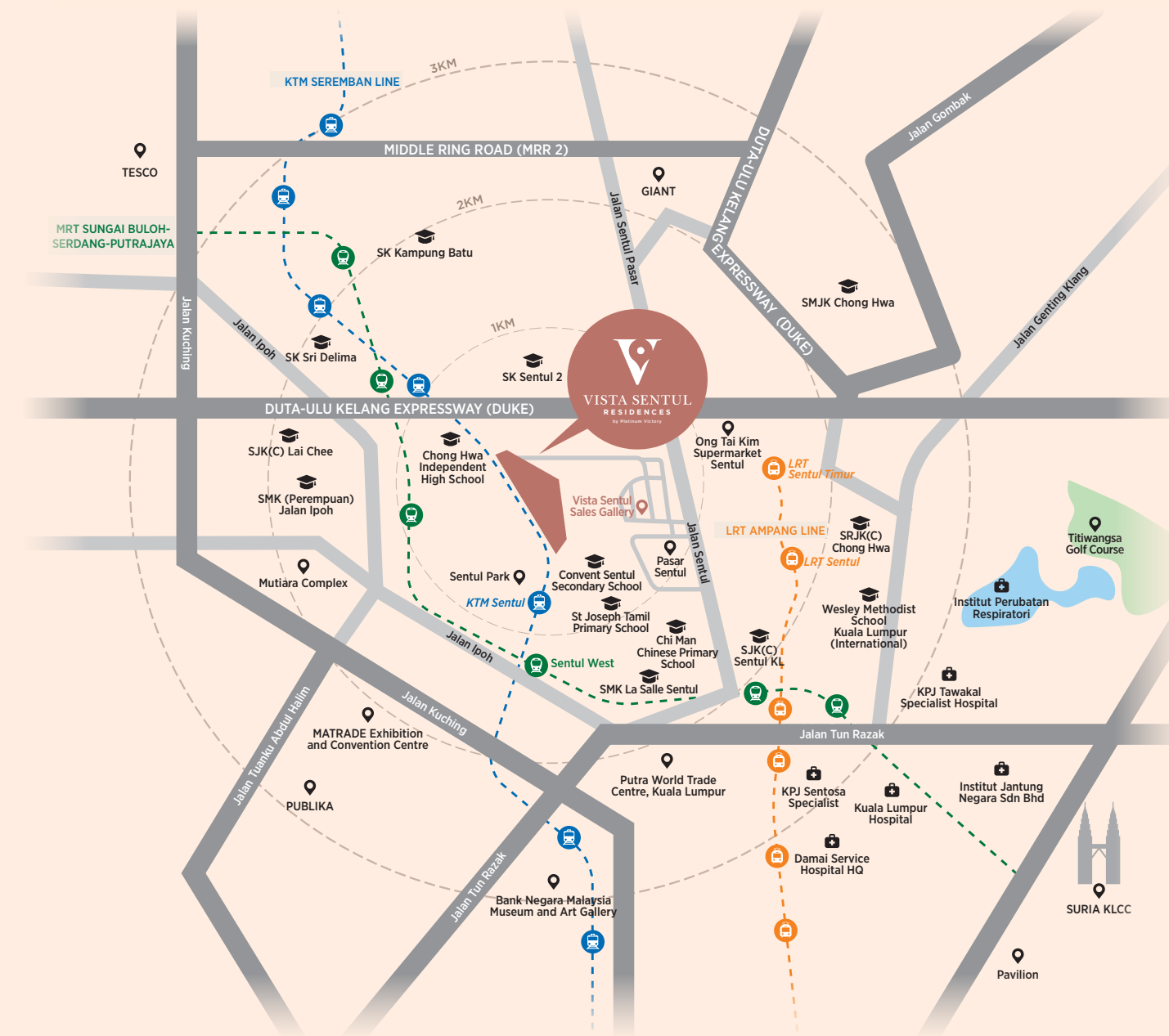
ELECTRICAL SPECIFICATIONS

Lighting Point	15	16	18	17	24
Fan Point	2	2	2	2	3
Power Point	17	17	19	18	25
AC Point	3	3	4	4	4
Water Heater Point	2	2	2	2	3
Electrical DB	1	1	1	1	2
SMATV Point (HD)	1	1	1	1	2
Door Bell Point	1	1	1	1	1
Fiber Wall Socket Outlet	1	1	1	1	2

SANITARY SPECIFICATIONS

Wash Basin with Tap	2	2	2	2	3
Bath Bib Tap	2	2	2	2	3
Wash Closet	2	2	2	2	3
Shower Head	2	2	2	2	3
Kitchen Sink with Tap	1	1	1	1	2
Yard Bib Tap	1	1	1	1	1
Toilet Paper Holder	2	2	2	2	3

Location



EDUCATION

Chong Hwa Independent High School	450m
SK Sentul 2	550m
St Joseph Tamil Primary School	750m
Convent Sentul Secondary School	850m
Chi Man Chinese Primary School	900m
SJK(C) Lai Chee	1.3km
SMK La Salle Sentul	1.4km
SJK(C) Sentul KL	1.5km
Wesley Methodist School Kuala Lumpur (International)	1.6km
SMK (Perempuan) Jalan Ipoh	2.0km
SRJK(C) Chong Hwa	2.5km
SK Kampung Batu	2.6km
SMJK Chong Hwa	3.2km
SK Sri Delima	3.3km

SHOPPING

SOGO	4.6km
KLCC	5.8km
Pavilion	6.2km
KL Sentral	6.8km
Publika	7.7km

MEDICAL CENTRES

Sentul Medical Centre	2.1km
KPJ Tawakal Jalan Pahang Hospital KL	2.9km
Kuala Lumpur Hospital	3.4km

TRANSPORTATION

KTM Sentul	2.9km
LRT Sentul Timur	1.9km
LRT Sentul	2.0km
MRT Sentul West (Expected to complete & start operation by 2022)	2.3km

HIGHWAYS

Duta-Ulu Kelang Expressway	500m
----------------------------	------