



minimalist
living
meets
maximized
nature



Strategic.

Yes, life is a breeze at Sutera Damansara.

A location dotted with shopping hotspots, international schools and prestigious golf clubs. A network of highways that connects you to your destination within minutes.

- Sungai Buloh KTM Station
- Sungai Buloh MRT Station (under construction)
- 6km to Desa Parkcity
- 6km to Sungai Buloh
- 8km to Kota Damansara
- 10km to Bandar Utama
- 13km to Sunway Damansara

OPEN FOR REGISTRATION

☎ 03 6142 1188 / 012 355 8311 | www.suteradamansara.com.my

Developer SEMPONIA SDN BHD (593349-U) A Subsidiary of OSK Property Holdings Bhd (201686-D)
Head Office 9th Floor, Plaza OSK, Jalan Ampang, 50450 Kuala Lumpur, Malaysia. Tel: +603 2161 3322 Fax: +603 2161 3327
Site Sales Office Lot 9815, Sutera Damansara, Jalan PJU 10/5, Petaling Jaya, 47830, Petaling Jaya, Selangor
 Tel: +603 6142 1188 Fax: +603 6142 1796

Joint venture by:



All information contained herein is subject to change without notification as may be required by the relevant authorities or developer's architect and correct form part of an offer or contract. All illustrations and pictures are artist's impressions only. All measurements are approximate. While every care has been taken in providing this information, the owner, developer and managers cannot be held liable for any inaccuracy. All above terms are subject to variations, modifications and substitutions as may be required by the relevant Authorities or recommended by the Architect or Engineer.

almira28
SUTERA DAMANSARA

[More exclusive with only 28 units]

the superlink 24' x 85'



Space.

At here, no detail is too small, and **Almira28** is literally sizable in everything after all.

Bask in the immaculate prestige and affluent nature, this is where calming minimalist meets maximized freedom within an epitome bold coupling of space and privacy as we value unlimited life and **Almira28** offers just that.

minimalist
design
— meets —
maximized
space



[thefloorplan]

2½ Storey Superlink Homes

CORNER

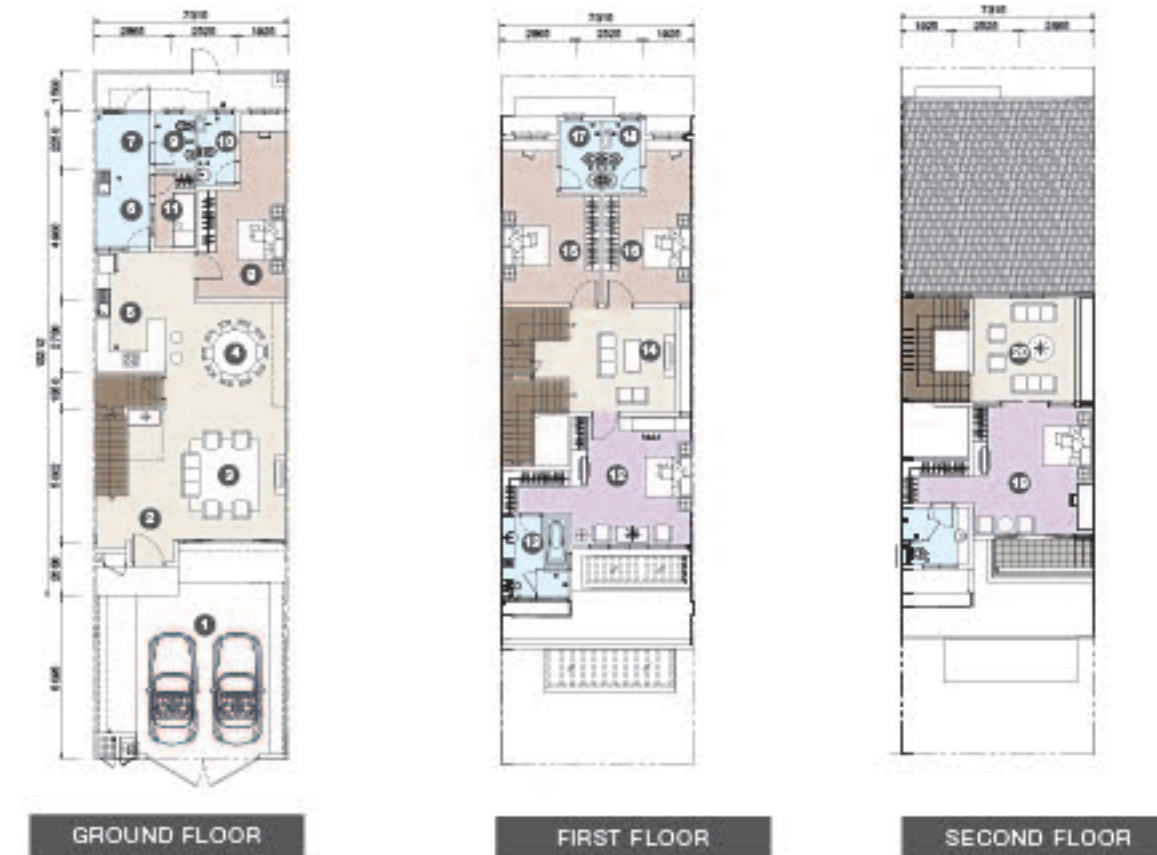
Build-up: 4,082 sq.ft. | 5+1 rooms; 6 bathrooms

- 1 CAR PORCH
- 2 ENTRANCE
- 3 LIVING
- 4 DINING
- 5 DRY KITCHEN
- 6 WET KITCHEN
- 7 YARD
- 8 GUEST ROOM
- 9 BATHROOM 4
- 10 GUEST BATHROOM
- 11 UTILITY
- 12 MASTER BEDROOM
- 13 MASTER BATHROOM
- 14 FAMILY HALL
- 15 BEDROOM 2
- 16 BEDROOM 3
- 17 BATHROOM 2
- 18 BATHROOM 3
- 19 JUNIOR SUITE
- 20 LOUNGE



INTERMEDIATE

Build-up: 3,794 sq.ft. | 5+1 rooms; 6 bathrooms



Almira28 Superlink Homes are as big as a Semi-D, in a nature-inspired township. Now you can enjoy **MORE** of everything!

- Guarded community
- Matured township with established amenities
- Walking distance to Sutera Spring Linear Park
- Modern & elegant design
- Ample space for even your extended family
- Wet & dry kitchens
- Solar water heater system
- Home alarm system
- Furnished with air-conditioner units

minimalist
plan
— meets —
maximized
pleasure

